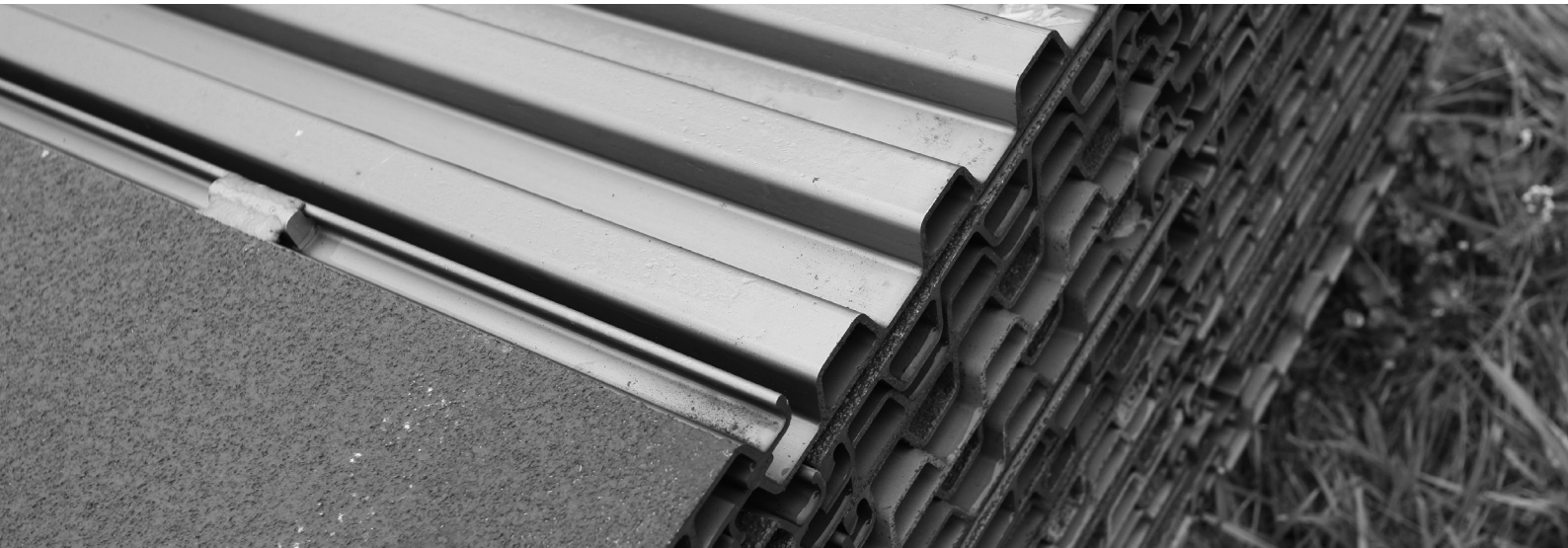


TECHNICAL INFORMATION

HELICOPTER LANDING MAT (HLM)



HELICOPTER LANDING MAT

FAUN Trackway's Helicopter Landing Mat (HLM) allows expeditionary forces to create safe landing areas or zones with a choice of Landing Points of varying dimensions in order for helicopters to service the Forward Operating Base (FOB), undertake essential maintenance or drop off supplies. HLM suppresses dust and foreign objects, ensuring pilot and crew safety as well as asset protection.

CAPABILITY

- ▶ Provide temporary or semi-permanent landing areas;
- ▶ Prevent Foreign Object Damage (FOD), thus protecting assets;
- ▶ Alleviate brown out by suppressing dust and airborne debris;
- ▶ Clearly mark permissible landing areas;
- ▶ Create a safe landing area for multiple aircraft;
- ▶ No risk of rucking or snagging;
- ▶ Create a safe working or loading area for ground personnel;
- ▶ Ensure ground/environmental protection;
- ▶ Facilitate multiple landings at the same location;
- ▶ Be easily deployed and recovered using minimal manpower;
- ▶ Be reusable and recyclable, have a long working life and a residual value at the end of their useful life;
- ▶ Create a stable platform.



HLM are anchored to the ground and can be used for as little as a day or as a permanent installation. HLM can be built to custom sizes and configurations.

All FAUN Trackway Helicopter Landing Mat panels are suitable for:

- ▶ Light Observation Helicopters (LOH) e.g. Gazelle;
- ▶ Light Utility Helicopters (LUH) e.g. Lynx;
- ▶ Anti-Tank Helicopters (ATH) e.g. Apache;
- ▶ Attack Helicopters (AH) e.g. Cobra;
- ▶ Light Support Helicopters (LSH) e.g. Merlin, Puma, Sea King;
- ▶ Medium Support Helicopters (MSH) e.g. Chinook;
- ▶ Tactical Transport Helicopter (TTH) e.g. NH90.

Selected HLM panels are suitable for:

- ▶ Heavy Multi-role Helicopters e.g. V-22 Osprey



FEATURES

- ▶ Light but strong panels;
- ▶ Self aligning;
- ▶ Non-snagging;
- ▶ High temperature capability.

SPECIFICATION

Helicopter Landing Mats can be packaged into either stillages, 463L pallets or multi-role packaging (MRP) containers.

The multi-role packaging solution is an ISO container which can be transported by land, sea or air. This enables expeditionary, humanitarian and relief personnel to access all the equipment and tools necessary to build a helipad.

The container is fitted with lighting, furniture, storage areas and a power supply so that it can be used as an operational base once the HLM has been deployed.



DIMENSIONS

TRACKWAY OPTION 1



PSA

▶ Effective Width:	251mm
▶ Overall Width:	269mm
▶ Length:	2740mm as standard
▶ Height:	22.2mm
▶ Weight:	9.51kg
▶ Effective Area:	0.688m ²
▶ Area weight:	13.82 kg/m ²

Panel size:

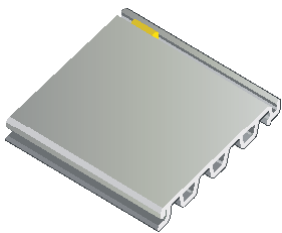
▶ Full panel =	(W) 269mm x (H) 22.2mm x (L) 2740mm
▶ Half panel =	(W) 269mm x (H) 22.2mm x (L) 1370mm

Panel weight:

▶ Full panel =	9.51kg
▶ Half panel =	4.76kg

PSA panels are anodised for durability, protection from corrosion and glare-reduction. Ground anchorage accessories included.

TRACKWAY OPTION 2



PSA-FT

▶ Effective Width:	242.6mm
▶ Overall Width:	260.8mm
▶ Length:	2636mm as standard
▶ Height:	22.25mm
▶ Weight (paint):	12.49kg
▶ Weight (clean):	11.79kg
▶ Effective Area	0.6395m ²
▶ Area weight (paint):	19.53kg/m ²

Panel size:

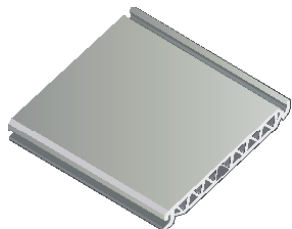
▶ Full panel =	(W) 260.8mm x (H) 22.25mm x (L) 2636mm
▶ Half panel =	(W) 260.8mm x (H) 22.25mm x (L) 1316mm

Panel weight:

▶ Full panel (paint/clean) =	12.49kg/11.79kg
▶ Half panel (paint/clean) =	6.24kg/5.89kg

PSA-FT panels are anodised for durability, protection from corrosion and glare-reduction. An optional non-slip/skid painted finish can be applied to the panels if required. Ground anchorage accessories are included.

TRACKWAY OPTION 3



S-46

▶ Overall Width:	1060mm
▶ Length:	2122.5mm as standard
▶ Height:	30mm
▶ Weight (paint):	50.85kg
▶ Weight (clean):	48.40kg
▶ Effective Area	2.25m ²
▶ Area weight (paint):	22.6kg/m ²
▶ Area weight (clean):	21.51kg/m ²
▶ Full panel with lock bar and paint:	53.07kg
▶ Area weight (with lockbar and paint):	23.57kg/m ²

Panel size:

▶ Full panel =	(W) 1060mm x (H) 30mm x (L) 2122.5mm
▶ Half panel =	(W) 1060mm x (H) 30mm x (L) 1060mm

Panel weight:

▶ Full panel (paint/clean) =	50.85kg/48.40kg
▶ Half panel (paint/clean) =	25.87kg/24.65kg

S46 panels are anodised for durability, protection from corrosion and glare-reduction. An optional non-slip/skid painted finish can be applied to the panels if required. Ground anchorage accessories are included.

TRACKWAY OPTION 4



M150

▶ Overall Width:	4572mm
▶ Effective Length:	212mm as standard
▶ Overall Length:	228mm
▶ Height:	31mm
▶ Weight:	33.11kg
▶ Effective Area:	0.96m ²
▶ Total weight:	3.11kg
▶ Area weight:	34.1kg/m ²

Panel size:

▶ Full panel =	(W) 4572mm x (H) 31mm x (L) 228mm
▶ Half panel =	(W) 2286mm x (H) 31mm x (L) 228mm

Panel weight:

▶ Full panel =	3.11kg
▶ Half panel =	16.6kg

M150 panels are anodised for durability, protection from corrosion and glare reduction. An optional non-slip/skid painted finish can be applied to the panels if required. Ground anchorage accessories included.

PACKAGING OPTIONS (*panels only)

PSA HLM Size	Qty of Stillages
10m x 10m	1
15m x 15m	2
20m x 20m	4
25m x 25m	6
30m x 30m	8

PSA-FT HLM Size	Qty of Stillages	Qty of Pallets	Qty of 463L Pal- lets	Qty of MRP 10ft	Qty of MRP 20ft
10m x 10m	1	1	1	1	1
15m x 15m	2	2	1	1	1
20m x 20m	4	4	2	2	1
25m x 25m	6	6	3	3	2
30m x 30m	8	8	4	4	2

MRP FITOUT OPTIONS

- ▶ Control room
- ▶ Office
- ▶ Logistics centre
- ▶ Accommodation
- ▶ Shower/toilet block
- ▶ Clinic
- ▶ Aid distribution centre
- ▶ Workforce break room
- ▶ Secure storage



ACCESSORY OPTIONS

- ▶ Air conditioning/heating;
- ▶ Petrol/diesel generator;
- ▶ Solar panels;
- ▶ Wind turbine;
- ▶ Plug sockets (various international).



FAUN Trackway Limited
Member of the KIRCHHOFF Group

Bryn Cefni Industrial Estate,
Llangefni, Isle of Anglesey,
LL77 7XA, UK

www.fauntrackway.co.uk
info@fauntrackway.co.uk
Tel: 44 (0) 1248 722 777
Fax: 44 (0) 1248 750 490



**INVESTORS
IN PEOPLE**

