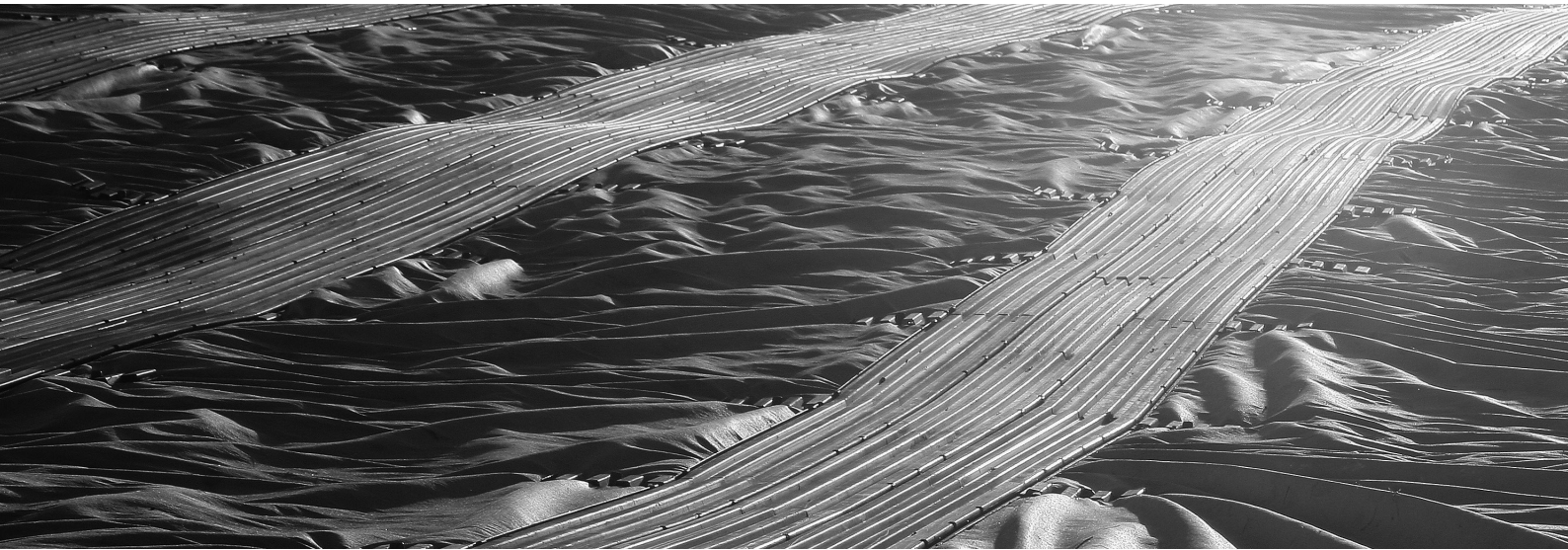


# TECHNICAL INFORMATION

## AIRCRAFT LANDING MAT (ALM)



---

# AIRCRAFT LANDING MAT

We offer a choice of three Trackway profiles which are supplied in kit form to create temporary runways, taxiways and hard standing for aircraft parking of varying dimensions.

Aircraft Landing Mat (ALM) panels are palletised in kit form, delivered to your chosen site and easily deployed by hand to create a runway suitable for aircraft.

## CAPABILITY

ALM Trackway has numerous capabilities including:

- ▶ Creates runways, taxiways and hard standing for aircraft parking for a variety of aircraft;
- ▶ Enables expeditionary forces to build temporary runways and aprons in areas where there is no time, requirement or ability to install a permanent airfield;
- ▶ Can be supplied to your exact size;
- ▶ Is available in a variety of panel profile designs, each suitable to a group of aircraft to ensure maximum utilisation;
- ▶ Can be used for as little as a day or as a more permanent installation.

## FEATURES

Our Landing Mats are designed to:

- ▶ Provide a temporary or semi-permanent landing and take-off area;
- ▶ Prevent Foreign Object Damage (FOD), therefore protecting aircraft assets;
- ▶ Alleviate brown out by suppressing dust and airborne debris;
- ▶ Clearly mark permissible landing areas;
- ▶ Create a safe landing area for multiple aircraft;
- ▶ Create a safe working/loading area for ground personnel;
- ▶ Ensure ground/environmental protection;
- ▶ Facilitate multiple landings at the same location;
- ▶ Be easily deployed and recovered using minimal person power;
- ▶ Be reused and recyclable, have a long working life and a residual value at the end of their useful life.

## SPECIFICATION

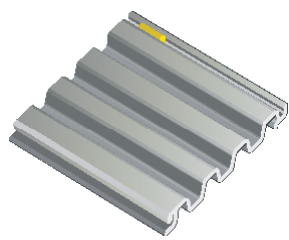
Our PSA and PSA-FT kits comprise of five elements:

- ▶ Trackway - aluminium panels are laid by hand and locked together to create the runway;
- ▶ Stillages - NATO pallets for storage and transport of the aluminium panels;
- ▶ Installation kit - equipment required for installing and removing the Trackway;
- ▶ Ground anchor stakes - to secure the Trackway to the ground;
- ▶ Membrane - a geotextile membrane that is placed underneath the Trackway to suppress dust, reduce brownout and protect the panels.



## DIMENSIONS

### TRACKWAY OPTION 1

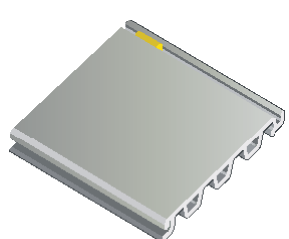


**PSA**

▶ Effective Width:	251mm	<b>Panel size:</b>	
▶ Overall Width:	269mm	▶ Full panel =	(W) 269mm x (H) 22.2mm x (L) 2740mm
▶ Length:	2740mm as standard	▶ Half panel =	(W) 269mm x (H) 22.2mm x (L) 1370mm
▶ Height:	22.2mm		
▶ Weight:	9.51kg	<b>Panel weight:</b>	
▶ Effective Area:	0.688m <sup>2</sup>	▶ Full panel =	9.51kg
▶ Area weight:	13.82 kg/m <sup>2</sup>	▶ Half panel =	4.76kg

PSA panels are anodised for durability, protection from corrosion and glare-reduction. Ground anchorage accessories are included.

### TRACKWAY OPTION 2

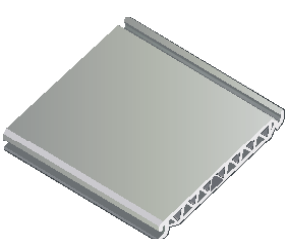


**PSA-FT**

▶ Effective Width:	242.6mm	<b>Panel size:</b>	
▶ Overall Width:	260.8mm	▶ Full panel =	(W) 260.8mm x (H) 22.25mm x (L) 2636mm
▶ Length:	2636mm as standard	▶ Half panel =	(W) 260.8mm x (H) 22.25mm x (L) 1316mm
▶ Height:	22.25mm		
▶ Weight (paint):	12.49kg	<b>Panel weight:</b>	
▶ Weight (clean):	11.79kg	▶ Full panel (paint/clean) =	12.49kg/11.79kg
▶ Effective Area	0.6395m <sup>2</sup>	▶ Half panel (paint/clean) =	6.24kg/5.89kg
▶ Area weight (paint):	19.53kg/m <sup>2</sup>		
▶ Area weight (clean):	18.44kg/m <sup>2</sup>		

PSA-FT panels are anodised for durability, protection from corrosion and glare-reduction. An optional non-slip/skid painted finish can be applied to the panels if required. Ground anchorage accessories are included.

### TRACKWAY OPTION 3



**S-46**

▶ Overall Width:	1060mm	<b>Panel size:</b>	
▶ Length:	2122.5mm as standard	▶ Full panel =	(W) 1060mm x (H) 30mm x (L) 2122.5mm
▶ Height:	30mm	▶ Half panel =	(W) 1060mm x (H) 30mm x (L) 1060mm
▶ Weight (paint):	50.85kg		
▶ Weight (clean):	48.40kg	<b>Panel weight:</b>	
▶ Effective Area	2.25m <sup>2</sup>	▶ Full panel (paint/clean) =	50.85kg/48.40kg
▶ Area weight (paint):	22.6kg/m <sup>2</sup>	▶ Half panel (paint/clean) =	25.87kg/24.65kg
▶ Area weight (clean):	21.51kg/m <sup>2</sup>		
		▶ Full panel with lock bar and paint :	53.07kg
		▶ Area weight (with lockbar and paint):	23.57kg/m <sup>2</sup>

S46 panels are anodised for durability, protection from corrosion and glare-reduction. An optional non-slip/skid painted finish can be applied to the panels if required. Ground anchorage accessories are included.

## ACCESSORIES

- ▶ Lighting systems
- ▶ Dust suppression membrane
- ▶ Painted markings
- ▶ Installation equipment





**FAUN Trackway Limited**  
Member of the KIRCHHOFF Group

Bryn Cefni Industrial Estate,  
Llangefni, Isle of Anglesey,  
LL77 7XA, UK

[www.faustrackway.co.uk](http://www.faustrackway.co.uk)  
[info@faustrackway.co.uk](mailto:info@faustrackway.co.uk)  
Tel: 44 (0) 1248 722 777  
Fax: 44 (0) 1248 750 490



**INVESTORS  
IN PEOPLE**

