

Hawkeye 1000 Digital Laser Profiler

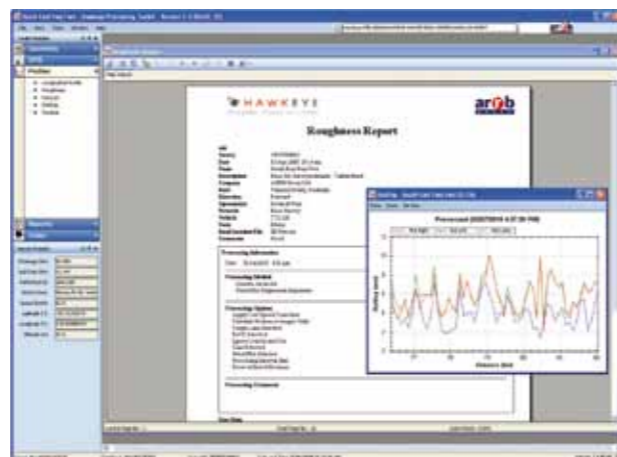
The Hawkeye 1000 Digital Laser Profiler (DLP) is an affordable, portable system that measures longitudinal profile, roughness and macrotexture (MPD and SMTD).

A World Bank Class 1 profiler, the Hawkeye 1000 DLP measures road profile using accelerometers and precision laser sensors to compensate for vehicle body movement.

The DLP is completely portable using a detachable sensor beam and comes complete with a tow-bar mounting kit, making it perfect for less frequent survey demands.

An accurate Distance Measuring Instrument (DMI) and the Heartbeat module are used to precisely link the data to distance/chainage.

Used in conjunction with the Hawkeye Processing Toolkit, you have the ability to produce tables, graphs, reports and exports from your collected data.



Applications

- Pavement condition assessment
- Accurate quality assessments
- Quality control
- Contract validation

Available outputs

- Longitudinal profile
- Roughness (IRI, NAASRA, Ride Number)
- Macrotexture (MPD and SMTD)
- GPS location / distance

Compliance with international standards

- ASTM E950: Longitudinal profile
- AASHTO PP37: Pavement roughness
- ASTM E1845: Pavement macrotexture
- ISO 13473: Mean Profile Depth (MPD)



Features

- World Bank Class 1 profiler with a choice of one, two or three laser combinations to suit all budgets
- Can be easily shipped for remote survey requirements and short-term vehicle installations
- Easily installed on a vehicle without special tools or personnel
- Lightweight aluminium beam with external weatherproof housing
- Data is linked to chainage and GPS coordinates
- Operational at highway speeds to reduce survey time and costs
- Results are independent of vehicle type

